



Crosby Gardens | Yateley | | GU46 7RT

Asking Price £900,000

Waterford's *W*
Residential Sales & Lettings

Crosby Gardens | Yateley | GU46 7RT Asking Price £900,000

A five bedroom detached house overlooking fields to the rear in a sought after location extended to provide an impressive kitchen/diner/family room and main bedroom suite.

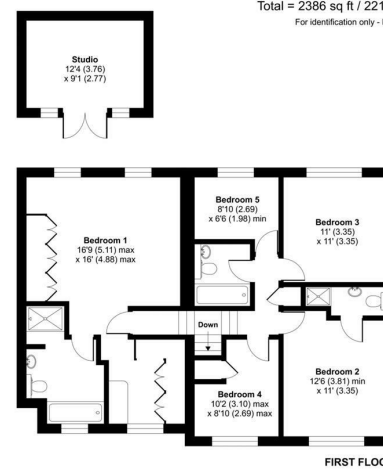
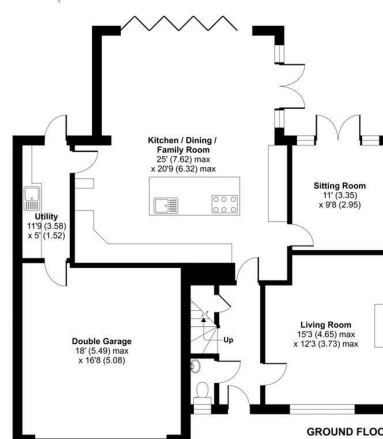


- Five bedrooms - two suites - three bathrooms
- A stunning main bedroom suite with views over fields
- A kit/diner/family room with the "wow" factor
- Two further reception rooms
- Lovely gardens with Garden Office
- Double garage and utility room
- Council tax Band G

Location

Outside

Description



Crosby Gardens, Yateley, GU46

Approximate Area = 2273 sq ft / 211.1 sq m (includes garage)
Studio = 113 sq ft / 10.4 sq m
Total = 2386 sq ft / 221.6 sq m
For identification only - Not to scale

Energy Efficiency Rating		
	Current	Potential
Very energy efficient - lower running costs		
(92 plus) A		
(81-91) B		
(69-80) C		
(55-68) D		
(39-54) E		
(21-38) F		
(1-20) G		
Not energy efficient - higher running costs		
England & Wales	73	82
	EU Directive 2002/91/EC	

35 Plough Road
Yateley
Hampshire
GU46 7UW
01252 870222

yateley@waterfords.co.uk
<https://www.waterfords.co.uk>



Floor plan produced in accordance with RICS Property Measurement Standards incorporating International Property Measurement Standards (IPMS Residential). © richrecom 2023. Produced for Waterfords. REF: 999659

